

Getting Started in Workflows

Accessing Workflows

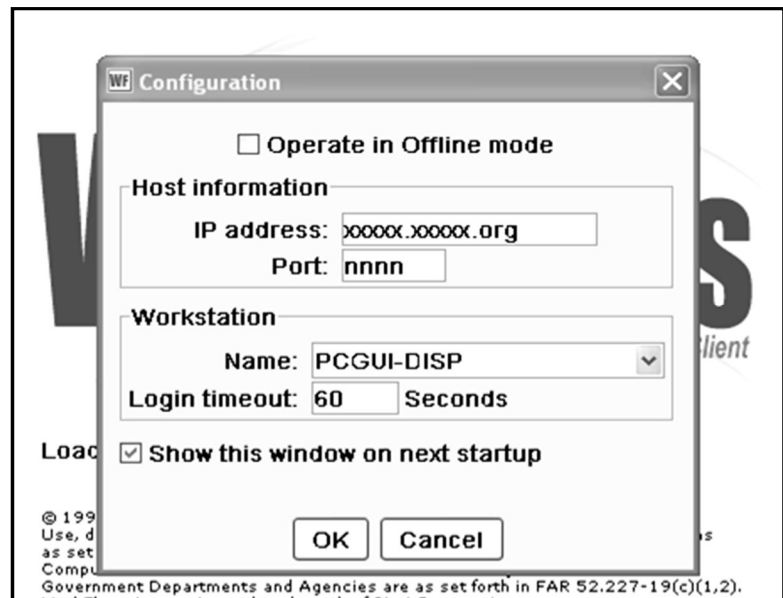


Double click on the Workflows icon on your desktop.

Logging in

1. **Connect** to Host

- A large screen similar to this will display. It should be configured for you. If you cannot access Workflows, contact your ITC .
- **Click** on OK at the bottom of the screen.



2. **Enter** your User ID and PIN.

